



www.shonadae.com





Keep yourself comfy, active and dry with our choice of maternity, activewear and shapewear products that specifically designed for you!

Shona Dae is one of the leading companies of seamless wear that specifically designs products for easing the life of our customers. Our company is simply founded with a clear objective: to create unique seamless products for our customers that facilitate their lives whether they be nursing moms, sports lovers or shapewearers. Last but not the least, in case of your specific demands and requirements, our team is ready to assist you finding unique and tailored solutions.

Simply put, they are created with you in mind. Our product range consists of breathable, moisture wicking fabrics that draw sweat away from the body, allowing the user to stay cool, dry, and comfortable each and every time. All our garments are carefully and ergonomically designed not only to ensure utmost comfort but also to provide excellent support for the targeted areas of the body as well as to maintain comfort and mobility during their usage. Most importantly, we can assure you that each product is carefully tested, tried and approved by experts before hitting the shelves.





SPECIALLY DESIGNED FOR YOU!

MATERNITY



MATERNITY TANK

FABRIC CONTENT: 92% PA, 8% Spandex **COLOR:** White / Black **SIZE:** S/M - L/XL - XXL

"Required changes can be made for the color, size and fabric composition."



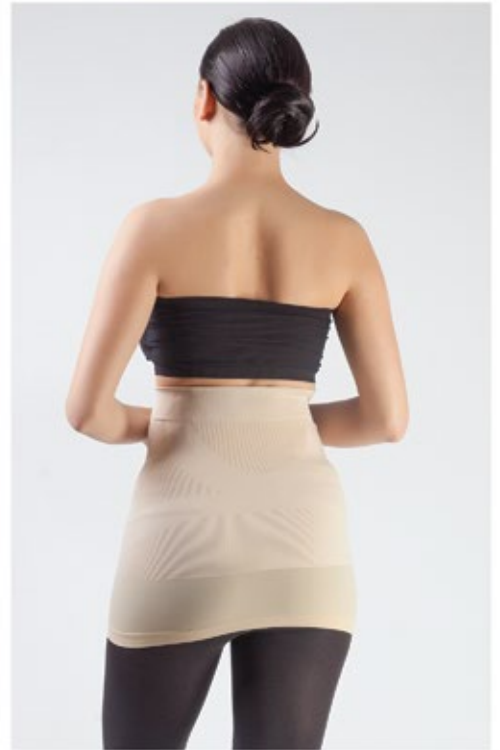
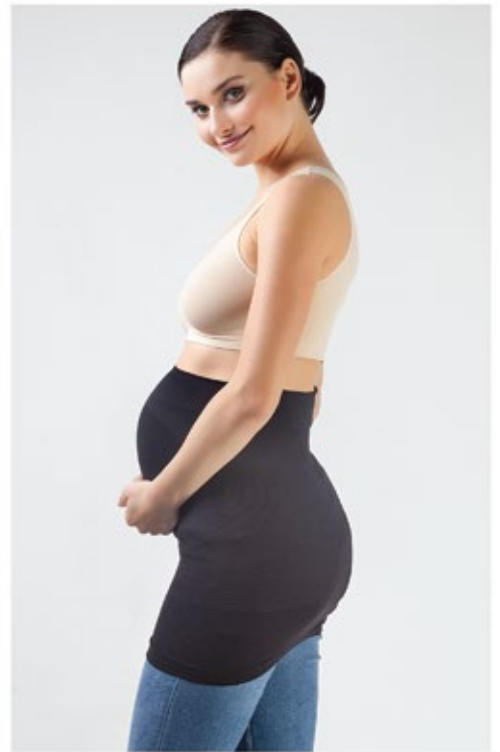
MATERNITY BRIEF

FABRIC CONTENT: 75% Bamboo, %8 PA, 17% Elastane

COLOR: White / Black

SIZE: S/M - L/XL - XXL

"Required changes can be made for the color, size and fabric composition."



MATERNITY SUPPORT BAND

FABRIC CONTENT: 75% PA, 25% Elastane **COLOR:** Nude / Black **SIZE:** S/M - L/XL - XXL

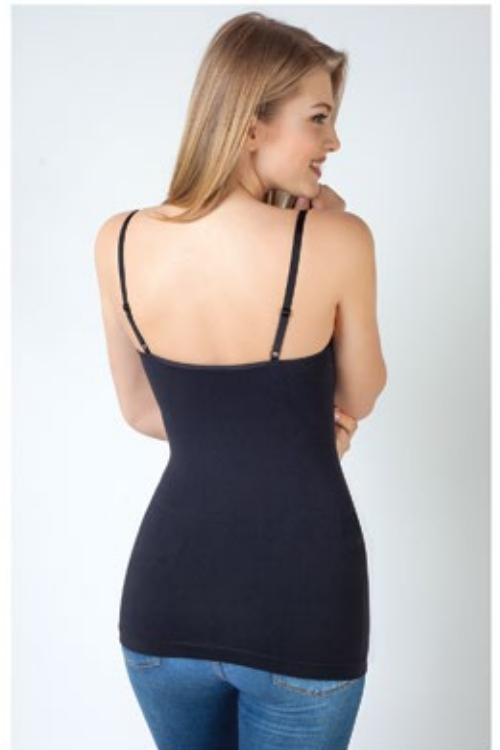
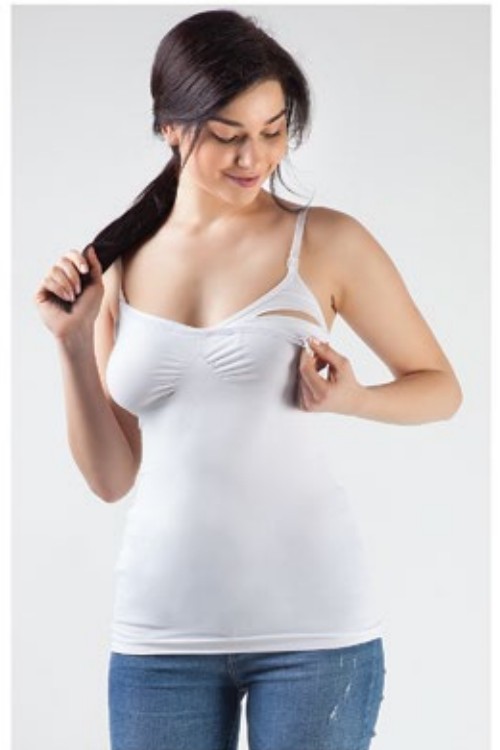
"Required changes can be made for the color, size and fabric composition."



MATERNITY LEGGINGS

FABRIC CONTENT: 93% PA, 7% Elastane **COLOR:** Grey Space Dye / Black **SIZE:** S/M - L/XL - XXL

"Required changes can be made for the color, size and fabric composition."



NURSING TANK

FABRIC CONTENT: 90% PA, 10% Spandex **COLOR:** White / Black **SIZE:** S/M - L/XL - XXL

"Required changes can be made for the color, size and fabric composition."



FLEXIEBAND

FABRIC CONTENT: 95% PA, 5% Spandex **COLOR:** Nude / Black **SIZE:** S/M - L/XL - XXL

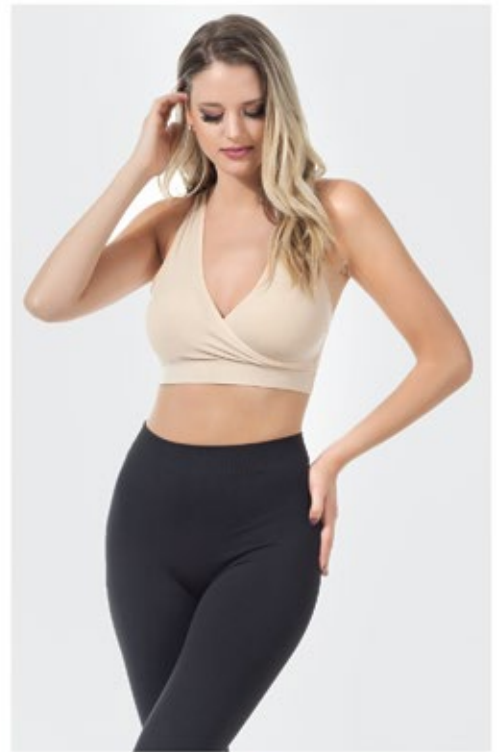
"Required changes can be made for the color, size and fabric composition."



CROSSOVER NURSING BRA

FABRIC CONTENT: 96% PA, 4% Spandex **COLOR:** Nude / Black **SIZE:** S/M - L/XL - XXL

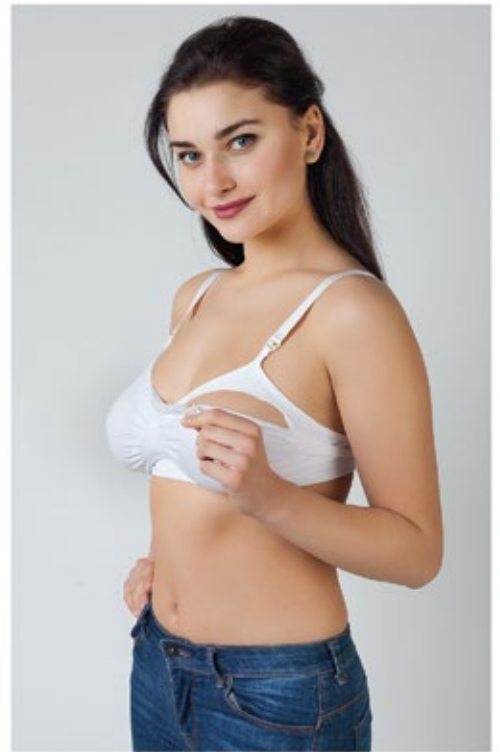
"Required changes can be made for the color, size and fabric composition."



PADDED CROSSOVER NURSING BRA

FABRIC CONTENT: 92% PA, 8% Elastane **COLOR:** Nude / Black **SIZE:** S/M - L/XL - XXL

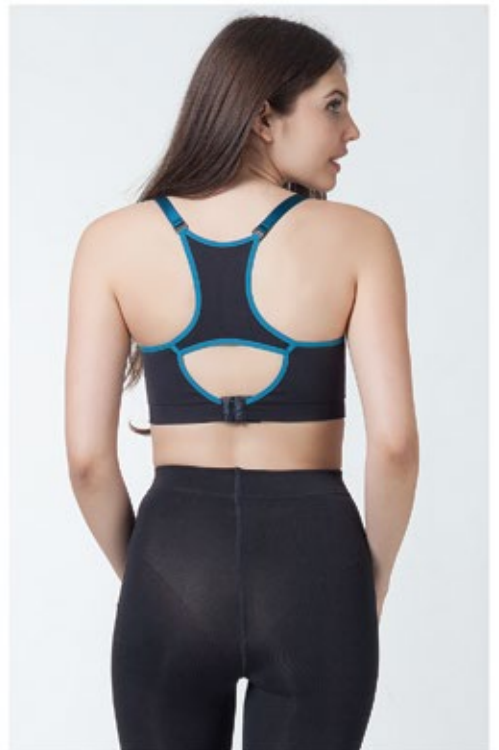
"Required changes can be made for the color, size and fabric composition."



DROP CUP NURSING BRA

FABRIC CONTENT: 90% PA, 10% Spandex **COLOR:** White / Black **SIZE:** S/M - L/XL - XXL

"Required changes can be made for the color, size and fabric composition."



YOGA NURSING BRA

FABRIC CONTENT: 90% PA, 10% Elastane **COLOR:** Black-Navy / Black-Fucshia **SIZE:** S/M - L/XL - XXL

"Required changes can be made for the color, size and fabric composition."

ACTIVEWEAR





SPORTS CAPRI

FABRIC CONTENT: 93% PA, 7% Elastane **COLOR:** Black **SIZE:** S/M - L/XL - XXL

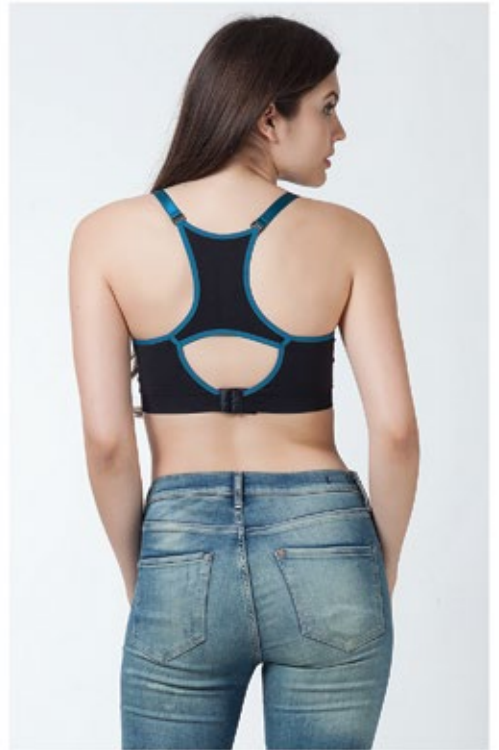
"Required changes can be made for the color, size and fabric composition."



ANTI CELLULITE CAPRI

FABRIC CONTENT: 95% PA, 7% Elastane **COLOR:** Black **SIZE:** S/M - L/XL - XXL

"Required changes can be made for the color, size and fabric composition."



YOGA NURSING BRA

FABRIC CONTENT: 90% PA, 10% Spandex **COLOR:** Black-Navy / Black-Fucshia **SIZE:** S/M - L/XL - XXL

"Required changes can be made for the color, size and fabric composition."



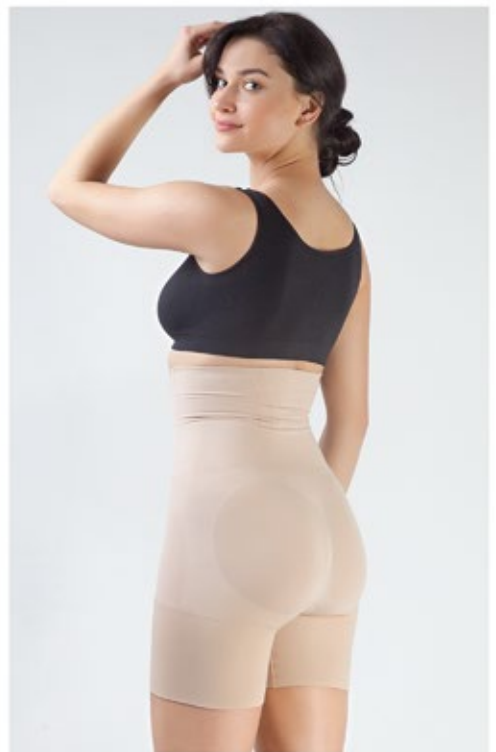
SPORTS LEGGINGS

FABRIC CONTENT: 86% PA, 14% Elastane **COLOR:** Black **SIZE:** S/M - L/XL - XXL

"Required changes can be made for the color, size and fabric composition."



SHAPEWEAR



HIGH WAISTED SHORTS

FABRIC CONTENT: 89% PA, 11% Elastane **COLOR:** Nude / Black **SIZE:** S/M - L/XL - XXL

"Required changes can be made for the color, size and fabric composition."



HIGH WAISTED BRIEFS

FABRIC CONTENT: 89% PA, 11% Elastane **COLOR:** Nude / Black **SIZE:** S/M - L/XL - XXL

"Required changes can be made for the color, size and fabric composition."



OPEN BUST SHAPING BODYSUIT

FABRIC CONTENT: 75% PA, 25% Elastane **COLOR:** Nude / Black **SIZE:** S/M - L/XL - XXL

"Required changes can be made for the color, size and fabric composition."



FLEXIEBAND



FLEXIEBAND

FABRIC CONTENT: 95% PA, 5% Elastane **COLOR:** Nude / Black **SIZE:** S/M - L/XL - XXL

"Required changes can be made for the color, size and fabric composition."



**LEGGINGS
& CAPRI**



DAILY CAPPRI

FABRIC CONTENT: 95% PA, 5% Elastane **COLOR:** Nude / Black **SIZE:** S/M - L/XL - XXL

"Required changes can be made for the color, size and fabric composition."



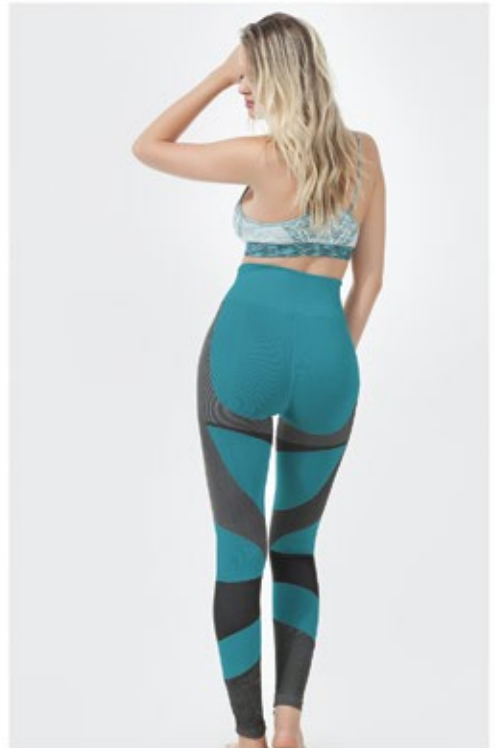
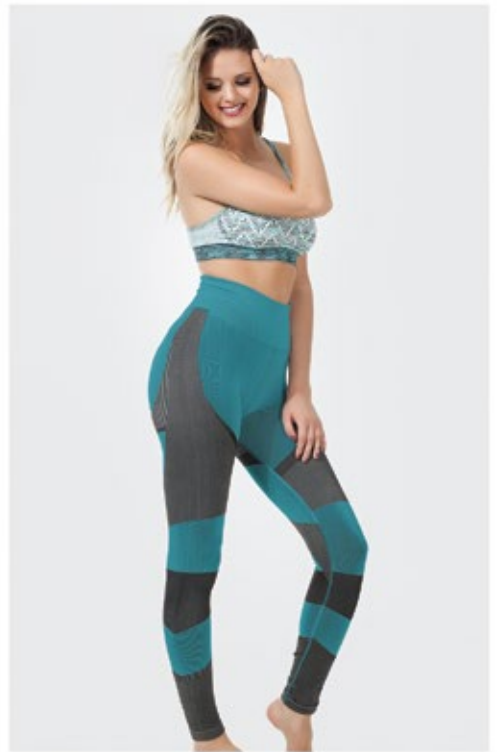
PILATES&YOGA LEGGINGS

FABRIC CONTENT: 55% PA, 35% PES, 10% Elastane

COLOR: Violet / Dark Blue / Purple

SIZE: S/M - L/XL - XXL

"Required changes can be made for the color, size and fabric composition."



FITNESS LEGGINGS

FABRIC CONTENT: 43% PA, 49% PES, 8% Elastane

COLOR: Various mixed-colors

SIZE: S/M - L/XL - XXL

"Required changes can be made for the color, size and fabric composition."



KHAKI LEGGINGS

FABRIC CONTENT: 92% PA, 8% Elastane **COLOR:** Various tones/colors

SIZE: S/M - L/XL - XXL

"Required changes can be made for the color, size and fabric composition."



Turgut Reis Mahallesi Tekstil Kent Ticaret Merkezi A-13 Blok No:26 Esenler - Istanbul / Turkey

Tel : +90 212 438 21 26-27

Fax : +90 212 438 21 28

www.shonadae.com

info@shonadae.com